



BusinessInnovationgroup

WebSphere. software

19 de agosto de 2004

Gustavo Gretter

ggretter@binnov.com
www.binnov.com
www.innovaportal.com



BusinessInnovationgroup

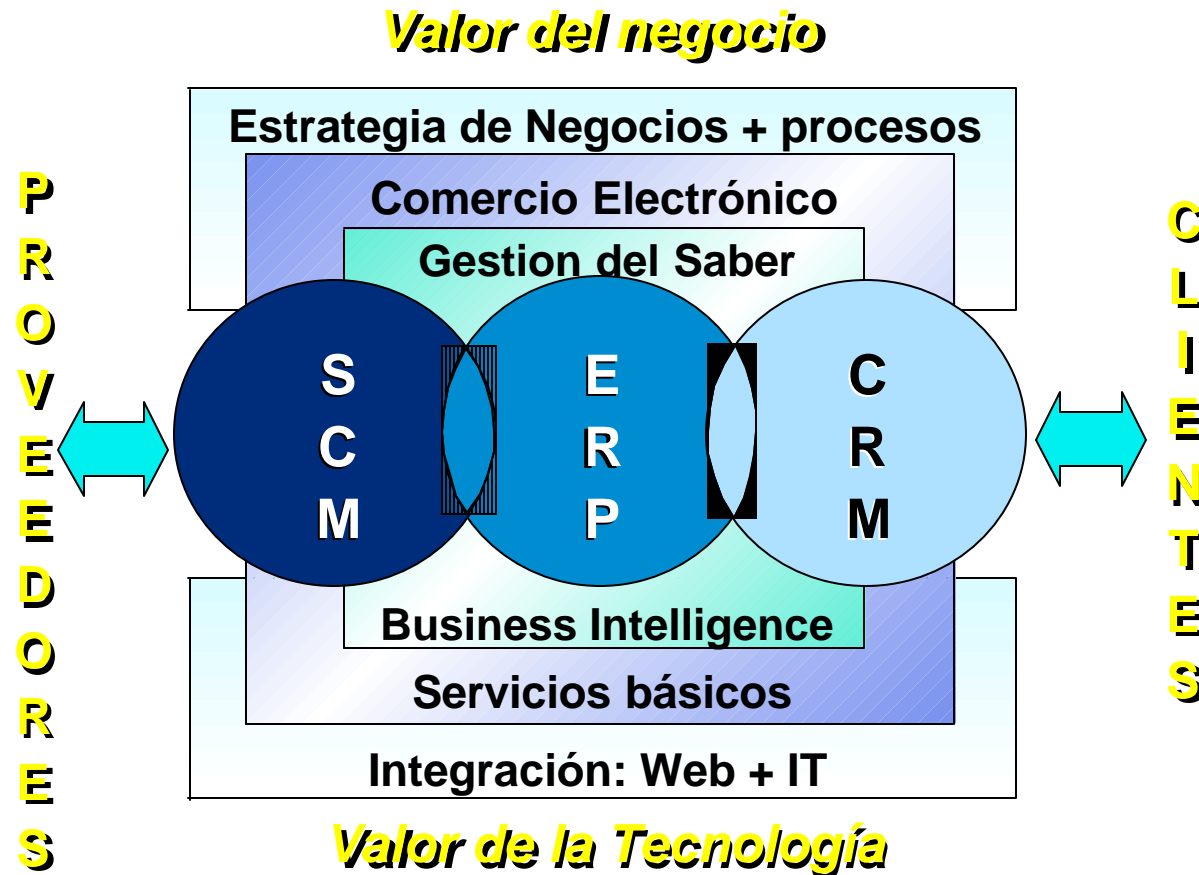
IBM WebSphere Software

- WebSphere Application Server
- WebSphere Studio
- WebSphere Host Integrator
- WebSphere Portal
- WebSphere EveryPlace
- WebSphere Voice
- WebSphere Commerce
- (conectores, portles, tools de terceros ...)

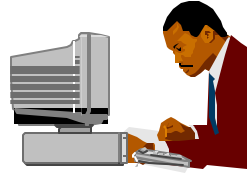
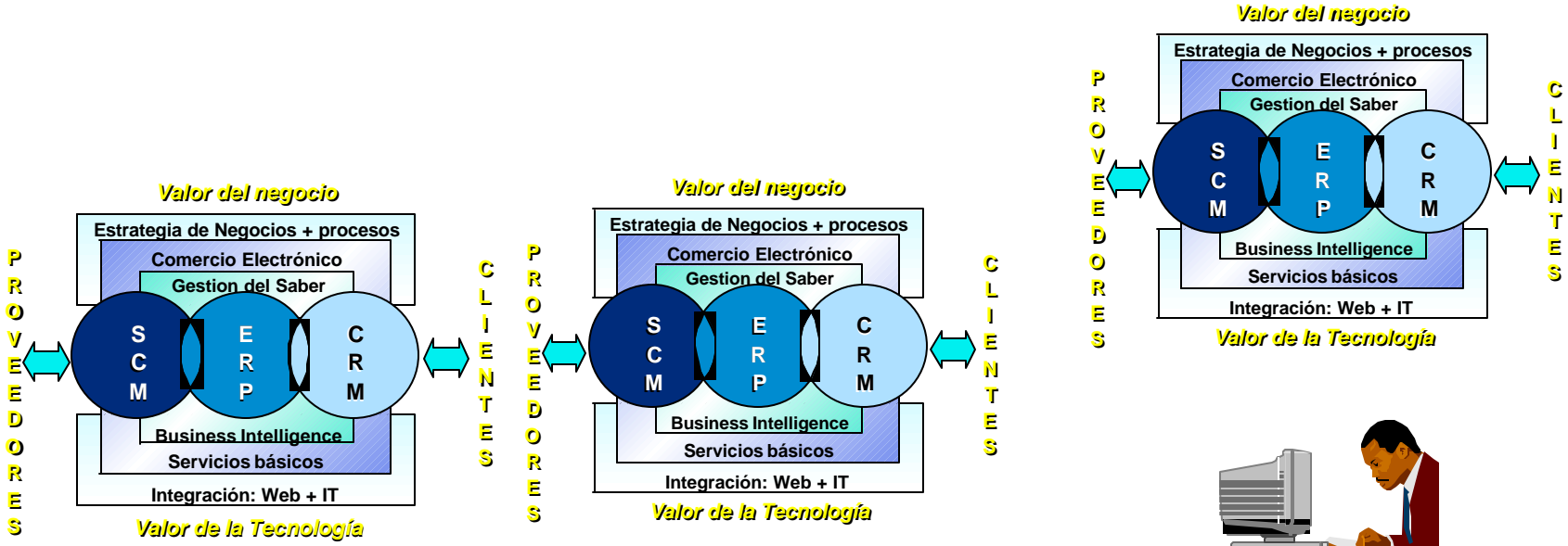
WebSphere. software



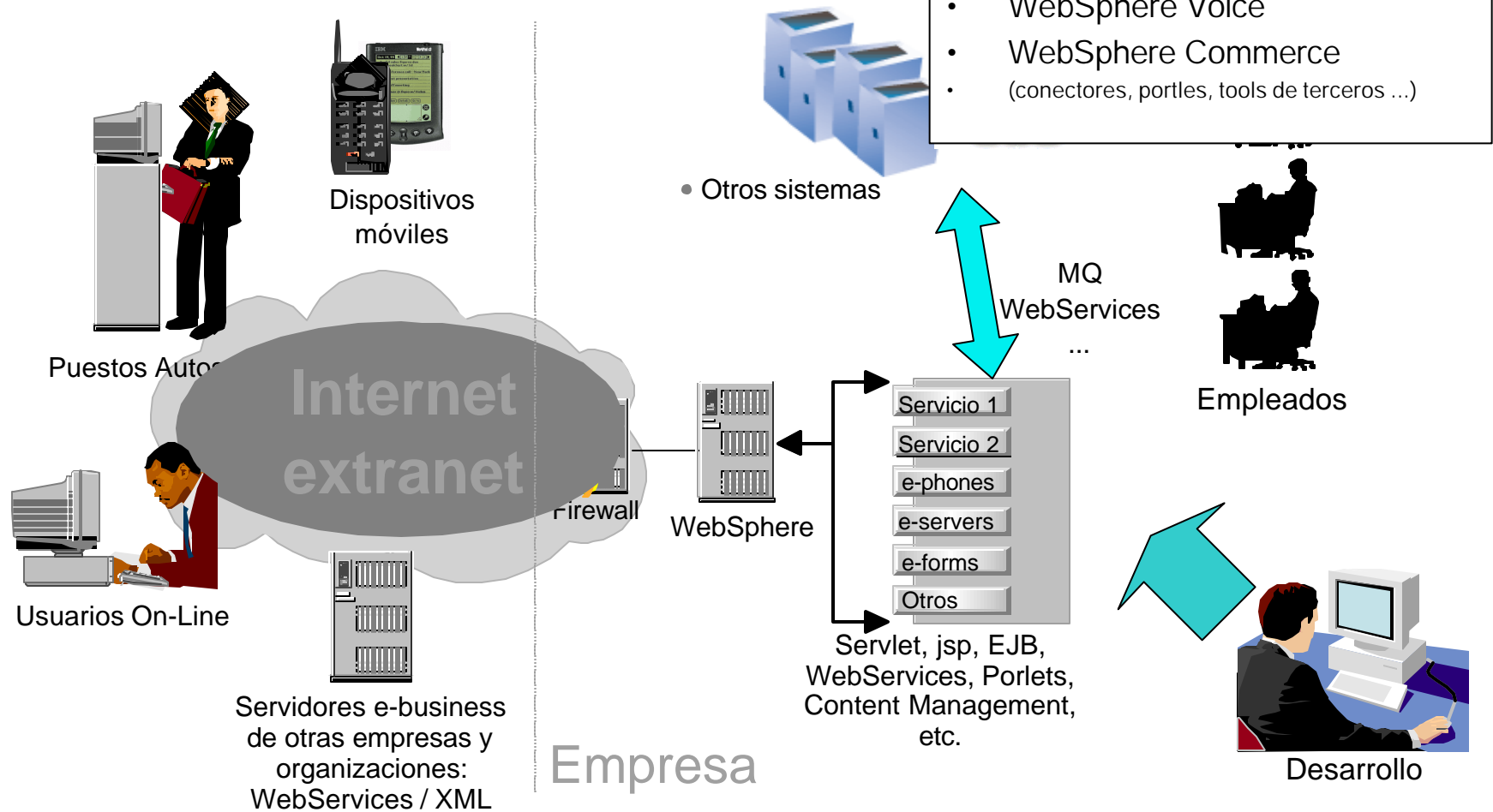
La empresa e-business



Integración en la cadena de valor



Ambiente heterogéneo



- WebSphere Application Server
- WebSphere Studio
- WebSphere Host Integrator
- WebSphere Portal
- WebSphere EveryPlace
- WebSphere Voice
- WebSphere Commerce
- (conectores, portles, tools de terceros ...)

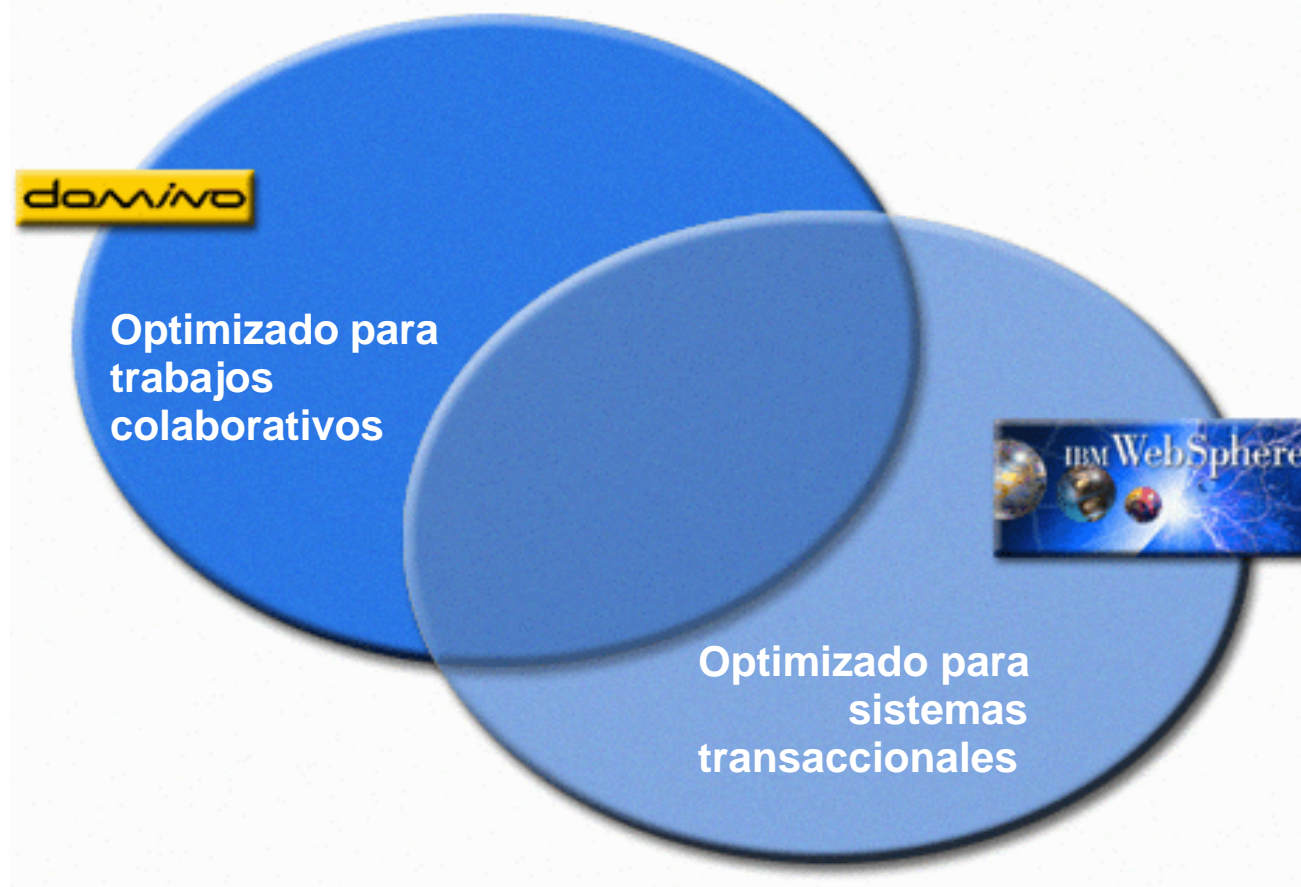
IBM WebSphere Software

- WebSphere Application Server
- **WebSphere Studio**
- WebSphere Host Integrator
- WebSphere Portal
- WebSphere EveryPlace
- WebSphere Voice
- WebSphere Commerce
- (conectores, portles, tools de tercers ...)

WebSphere. software



WebSphere + Lotus



IBM Websphere Application Server

- J2EE 1.3 Compliance
 - Tecnologías claves
 - Servlets
 - JSP
 - EJB
- WebServices
- SDK 1.4 (J2EE 1.4)
- Deploy Manager
 - Administra multiples nodos en una topología distribuida
- Administración
 - Browse based Administrative Console
 - XML-based configurable repository
 - Role based administration security
- Monitoreo y Análisis de rendimiento
- Alta disponibilidad
 - Clusters
 - Balanceo de carga
 - Ambiente multi-nodos
 - Etc.
- Ambientes distribuidos
 - Toda la topología desde la consola
- Proxy, Reverse Proxy, etc.
- Seguridad
- IBM HTTP Server



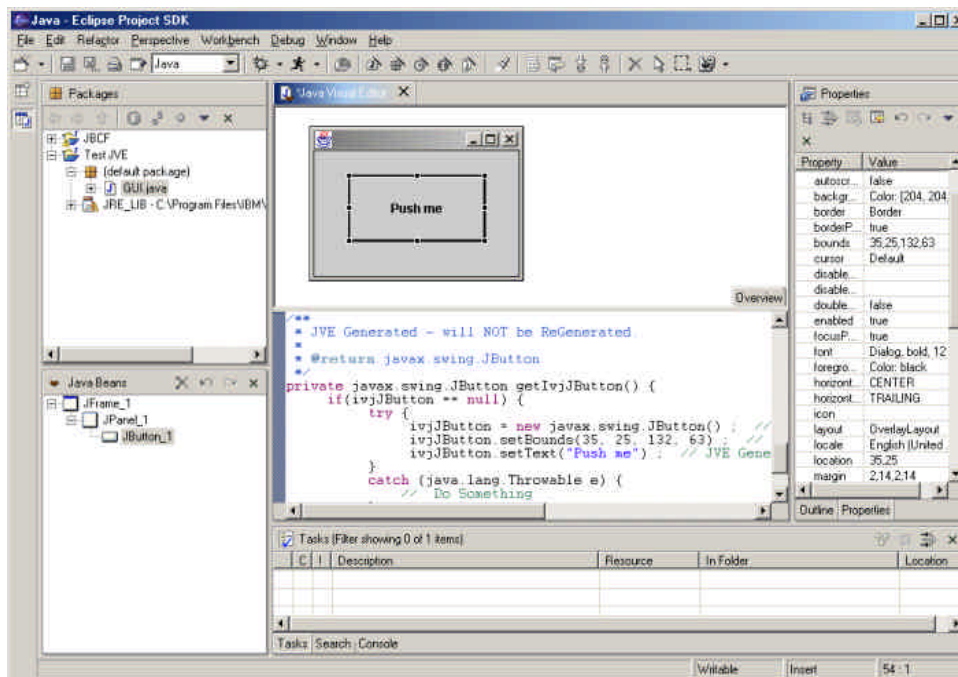
Standards Checklist

Standards	Level	WebSphere 5.0
J2EE	1.3	✓ Fully certified and part of Sun's JCEE list
EJB	2.0	✓ EJB 2.0 and EJB 1.1 support
JDK	1.3	✓ JDK 1.3
Servlet	2.3	✓ Servlet 2.3
JSP	1.2	✓ JSP 1.2
JTS/JTA	1.0.1	✓ w/distributed transactions
JMS	1.0.2	✓ With Native Provider, and MQ plug-in
JDBC	2.0	✓ 2PC across heterogeneous databases
JNDI	1.2	✓ JNDI 1.2 for EJB lookup and CosNaming
RMI/IIOP	1.3.1	✓ Fully supported
JavaMail/JAF	1.2	✓ Plus Domino support
SSL Security	2.0	✓ JSSE 1.0.2 and JCE 1.2.1
XML JAXP	1.1	✓ XML in EJBs
J-IDL/CORBA		✓ IIOP 1.2
J2C	1.0	✓ Bean and container managed
LDAP		✓ Directory Server, SecureWay, iPlanet, ActiveDirectory
HTTP	1.1	✓ Yes , plus across multiple Web servers
SOAP	2.3	✓ Soap support for WebServices.
SOAP-SEC	1.0	
COM/ASP Support	1.0	✓ w/Java wrapping & proxy
JMX	1.0	✓
XML4J	4.2	✓ XML support:includes JAXP1.1, XMLSchema1.0, Xerces1.4.1
XSL	2.3.6	✓ XSL parser



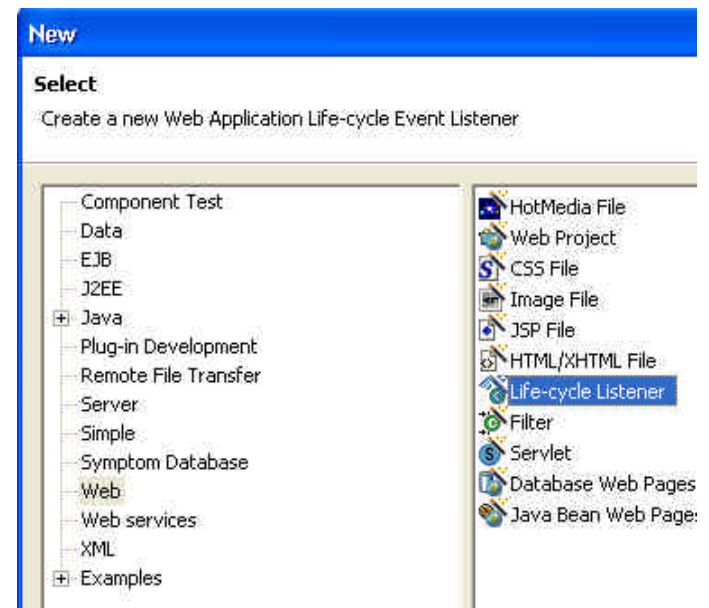
WebSphere Studio App. Developer

- WebSphere Studio Homepage Builder
- WebSphere Studio Site Developer
- WebSphere Studio Application Developer (*)
- WebSphere Studio Device Developer



Websphere Studio App. Developer

- Eclipse Platform
 - Plugin's
- Team Development Enhancements (CVS, Versiones, chkin/out, opt/pes lck)
- J2EE Tool Enhancements
- Server Tool Enhancements
- Java Visual Editor
- XML and Data Tools Enhancements
- Web Services Tools Enhancements
- Test and Analysis Tools Enhancements
- *Soporte para todas las variantes de WebSphere*



Gracias

